

Electronic
reference book

DeInfo

User manual

Content

Licensing Agreement	39
Agreement Conditions	39
Introduction	40
Benefits of «DeInfo» Computer Software	40
1. Structure and Program capabilities	40
1.1. Program Structure	40
1.2. Minimum System Requirements	41
1.3. Connecting of DETA and DeVita series devices	41
1.4. Standard connection route with the program	41
2. Working with the program	44
2.1. Choosing Language Interface	45
2.2. List of Programs	45
2.2.1. Search for Program by name	49
2.2.2. Search in Sets and Complexes	49
2.2.3. User Programs	49
2.2.4. Working with Database users	52

2.3.	Working with Health-improvement programs	55
2.3.1.	Manual Programs	55
2.3.1.1.	Formation of a List of programs	55
2.3.1.2.	Program search in the List of Programs	57
2.3.2.	Automatic Programs	57
2.3.2.1.	Formation of the List of Programs	60
2.3.2.2.	Programming Features of «DETA-AP» Devices of the 1st production line	60
2.4.	Interaction with the Device	63
2.4.1.	Device Identification	63
2.4.2.	Recording	63
2.4.3.	Printing of Programs	63
2.4.4.	Reading	64
2.4.5.	Archiving	64
2.5.	Updating	64
2.6.	About the Program	64

Licensing Agreement

The present licensing agreement (hereinafter referred to as the «Agreement») is concluded between the physical or the legal entity (hereinafter referred to as the «User»), using the «DeInfo» program and database programs of «DETA-ELIS Holding» in the form of the provided documentation in either printed or electronic form.

Conditions of the Agreement

1. The subject of the present Agreement is the right of usage for the «DeInfo» Program (hereinafter referred to as the «Program»), provided to the User in the manner and by the conditions provided by the present Agreement.
2. All provisions of the present Agreement extend both to all Programs as a whole and to the Programs as separate components.
3. The user has the right to receive additional Program updates via the Internet without additional charge to the maximum extent possible.
4. The user has the right to use the Program only while working work portable DETA and DeVita series devices.
5. The user can't copy the Program, transfer it to third parties, or provide the program or its components for rent/hire, including in the form of source text.

6. «DETA-ELIS Holding» doesn't bear any responsibility for the consequences that arise from wrong or incorrect Program usage.

7. Any usage of the Program contradicting the current legislation of the Russian Federation is forbidden.

8. The Agreement doesn't provide property rights to the Program, but only the right of usage of the Program and its components according to conditions of the present Agreement.

9. The Program is the intellectual property of «DETA-ELIS Holding». All property rights and copyright rights of the Program, including rights to the documentation and source text remain solely «DETA-ELIS Holding» property.

10. In case of violation of the copyright Agreement, the User bears responsibility according to the current legislation of the Russian Federation.

11. The present Agreement also applies to all updates provided to the User within the framework of support if the User isn't offered the option of adopting a new Agreement or additions to the agreement during the process of new program updates.

12. Before program usage, attentively examine conditions of the present Agreement. If you don't agree with the terms and conditions of the present Agreement, you should not use this

program. Installation and application of the program indicates your full consent with all points of the present Agreement.

Introduction

The DelInfo software (hereinafter referred to as the S/W) is designated for those who use the low-frequency electromagnetic devices of DETA and DeVita series.

Attention! S/W isn't intended for usage with portable devices such as «DETA (7 Programs)», «DETA (9 Programs)», «DETA (15 Programs)», «DETA-QUANTUM (15 Programs)»

Benefits of «DelInfo» Computer Software

1. Procedure of drawing up lists of programs became more informative in comparison to previous programs
2. Possibility of Internet updating is provided
3. Compatibility with the following Operating systems:
 - Windows XP;
 - Windows Vista;
 - Windows 7
 - Windows 8
4. Possibility of working in several languages:
 - Russian

- English
- Spanish
- French
- German

5. Lack of a CD disk. The reference book is defined as the external disk having at least 1 GB of free memory.

6. The software program is located in the memory of the DelInfo reference book and it launches automatically from the device. Installation on the computer isn't required

7. Existence of a program key in the programming tool protects S/W from unauthorized use.

Attentively review the manual and precisely follow its instructions!

1. Structure and Capabilities of Programs

1.1. Structure of Programs

Purpose of components of the program:

The basic list of programs – module intended for storage and classification of delivered health-improvement programs.

User programs – module intended for independently creating programs.

Attention! This module works only with «DETA-RITM» and «DeVita Ritm» devices.

Device identification – module intended for defining the type and modification of the device.

List health-improvement programs – module intended for drawing up and editing the list of written-down programs.

Quantity control and the naming of programs – module intended for compliance control of the list of written-down programs to device naming.

Recording, Reading – module providing program communication with the device.

Archive – module intended for saving of programs.

Print the program – module intended for listing of health-improvement programs.

Updating – module providing software updating on the Internet.

1.2. Minimal System Requirements

- Processor of 1 GHz
- Random access memory of 128 MB
- Existence of USB connection


Attention! Make certain that the computer on which you are going to launch «DelInfo» meets the minimum system requirements.

1.3. Connecting of DETA and DeVita series devices

The software program works with the electronic reference book of the DelInfo programs (hereinafter referred to as the «reference book»).

The reference book is intended for connecting the DETA and DeVita series portable devices to the computer and has two sockets: the wide – for connection to any USB port of the computer and the narrow (DeVita) socket – for connection to portable DeVita and DETA devices.

1.4. Standard connection route with the program

1. Connect the reference book to the computer (item 1.3). Thus, the reference book will be defined as a removable disk.
2. The StartDelInfo.exe file start the program (*scheme 1*).
3. With the help of the  icon on the main control panel, you can choose the interface language.
4. Connect the programmable device to the reference book according to the recommendations provided in the passport of the device.
5. Turn on the device. Thus, the program has to recognize the device.
6. Using the basic «List of Programs» and/or «User programs»,

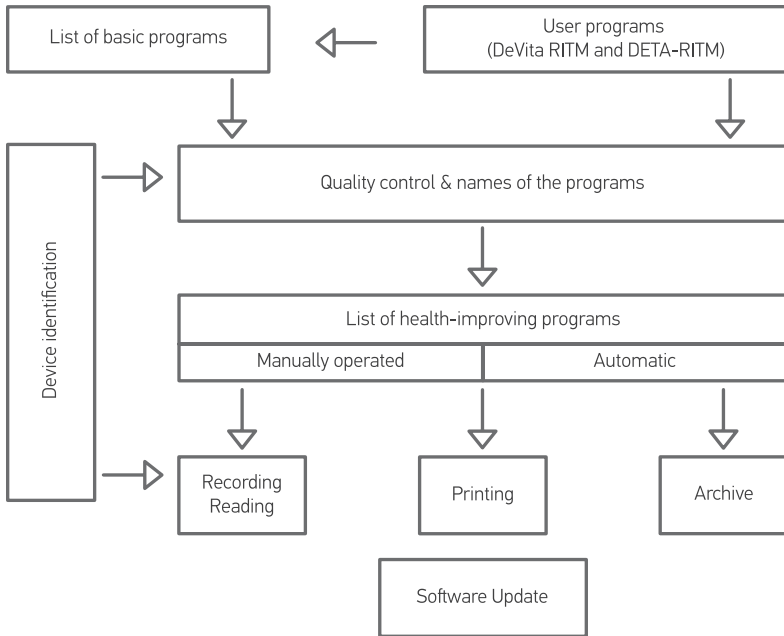


Table 1
Devices of the Product Range 1
(do not contain any additional index in their names)

Device name	Maximum quantity of the programs installed
«DETA-RITM-8»	8P + 3A
«DETA-RITM-10»	10P + 3A
«DETA-RITM-13»	13P+ 3A
«DETA-AVI5»	5P+3A*
«DETA-AP-8»	8P + 3A*
«DETA-AP-10»	10P+3A*
«DETA-AP-13»	13P+3A*
«DETA-AP-15»	15P+3A*
«DETA-AP-20»	20P+3A*

Table 2
Devices of the Product Range 2
(the "M2" index is added to their names)

Device name	Maximum quantity of the programs installed
«DETA-RITM-5» M2	5P+5A
«DETA-RITM-10» M2	10P+5A
«DETA-RITM-13» M2	13P+5A
«DETA-RITM-15» M2	15P+5A
«DETA-RITM-20» M2	20P+5A
«DETA-AP-5» M2	5P+5A
«DETA-AP-8» M2	8P+5A
«DETA-AP-10» M2	10P+5A
«DETA-AP-13» M2	13P+5A
«DETA-AP-15» M2	15P+5A
«DETA-AP-20» M2	20P+5A
«DeVita AP BASE»	30P+5A
«DeVita RITM BASE»	30P+5A

compose a list of «Manual Programs» and/or «Automatic Programs»

7. Write down the list of health-improvement programs of the device

8. If necessary, keep the list in «Archive» and/or print it out

Attention! The «Manual Programs» and «Automatic Programs lists» are organized by quantity and the program names together with the programming device, at all stages of work on PO.

2. Working with the Program

Existing modifications of electromagnetic therapy devices differ from the majority of written-down medical programs.

Note

P – Program from the list «Manual Programs»;

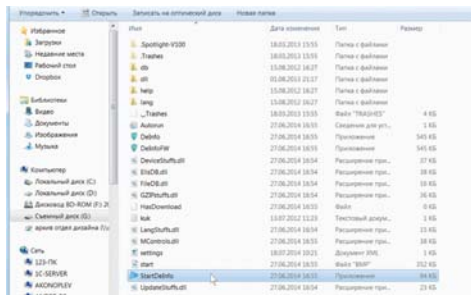
A – Program from the list «Automatic Programs»;

A* – programming according to the technique stated in the section 2.3.2.2 «Features of Programming...»

1. Launching of the Program (*scheme 2*)

During the launching of the program, the window opens (*scheme 3*)

After connecting the device and its recognition, the type of the main control panel, admissible quantity and type of programs



scheme 1



will be defined. Control of these functions happens both at a stage of formation of the list of programs and at the recording stage of the list of the device (*scheme 4*).

2. The menu of the main control panel contains seven points:

«File» – management of database content (hereinafter referred to as the Database) for the user (*scheme 5*)

«Programs» – access to basic «List of Programs» developed by «DETA-ELIS Holding» (*scheme 6*)

«User Programs» – access to the programs made by the user (Database Users) (*scheme 7*)

Attention! This function is supported by the program only for «DETA-Ritm» and «DeVita Ritm» series devices.

For «DETA-AP» and «DeVita AP» series devices, the item on the menu of the main panel isn't displayed.

«Archive» – Access to the Archival database (*scheme 8*)

«Updating» – Management of software updating (*scheme 9*)

«About the Program» – The name of the software program you are using (*scheme 10*)

«Choosing Language» – Choosing of language interface (*scheme 11*)

The field of the main window is divided into three zones:


- «List of Programs» – database Program;

- The «Manual Programs» and «Automatic Program» – set of the program intended for recording the device;

- «Interaction with the device» – set of controlling and informational components (*scheme 12*).

2.1. Choosing Language Interface






Working with the program begins with choosing the language of the interface.

Select the item  from the main control panel and in the revealed menu – interface language (*scheme 11*).

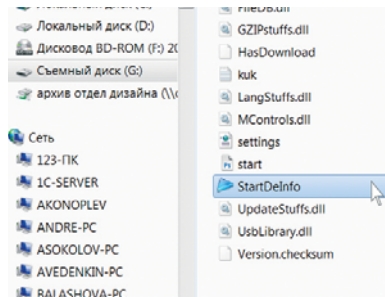
2.2. List of Programs

It is intended for search and editing of the programs, database storage, creating new things as needed and maintenance of existing databases.

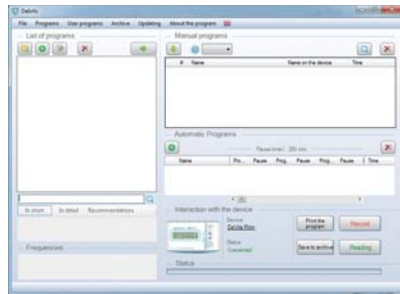
The menu of the panel of the list of programs contains five points (*scheme 13*):

-  to add a category
-  to add a program
-  to edit
-  to delete
-  to add a manual programs

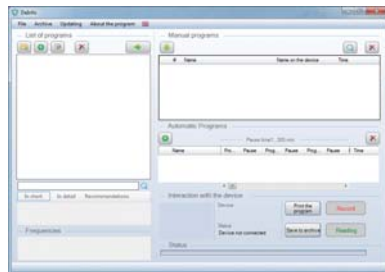
The field of the main window is divided into four zones (*scheme 14*):



scheme 2



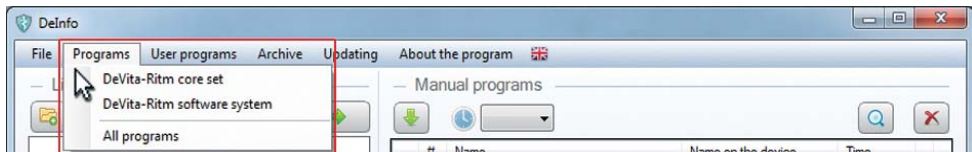
scheme 4



scheme 3



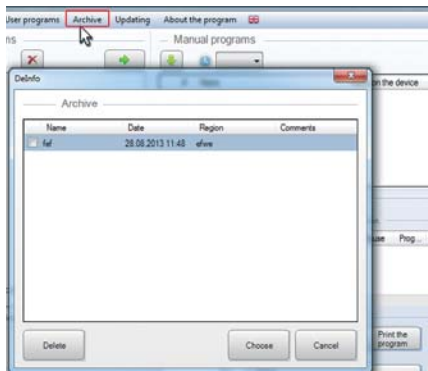
scheme 5



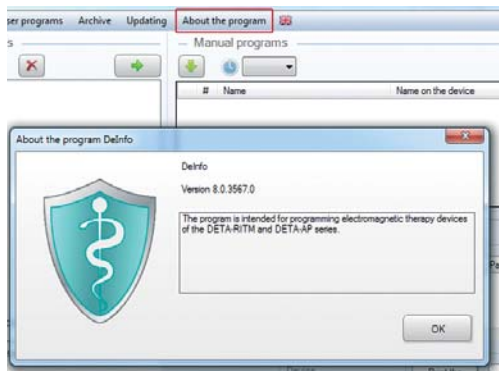
scheme 6



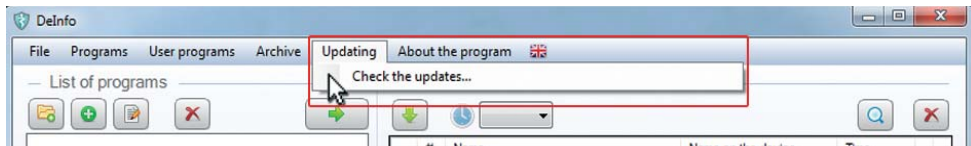
scheme 7



scheme 8



scheme 10



scheme 9

- «List of Programs» – database program;
- «Program search by name» – allows work on combinations of letters;
- «In short», «In detail», «Recommendations» – the concise or detailed description of the chosen program, usage recommendations;

Attention! Zone «In short», «In detail», «Recommendations» is currently being developed and it will be updated on the Internet during the receipt of information process.

- «Frequencies» – set of the frequencies corresponding to the chosen program.

Attention! «Frequencies» Zone – Only for «DETA-Ritm» devices of the 1st production line.

2.2.1. Search for Programs by Name

On the main control panel, select the item from the «Programs» menu and in the revealed window titled «All Programs» (*scheme 15*).

In a search line 

gather some letters of the name of the program that interests you. In the process of filling in lines in the «List of Programs», information will appear corresponding to search parameters. In this example, the search result for the combination of letters «acti» is shown (*scheme 15*). While choosing the necessary

program, its short and detailed description, recommendations and the inputted frequencies are displayed in the windows of the same name.

Attention! Frequencies are displayed only for «DETA-Ritm» and «DeVita Ritm» devices of the 1st production line.

2.2.2. Search in sets and complexes

On the main control panel, select the «Programs» menu and in the revealed window, select an interesting set or a combination of programs. The chosen programs will appear in the «List of Programs» window.

Choose necessary programs (*scheme 16*).

2.2.3. User programs

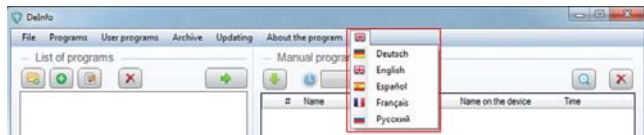
1. Creation

The user programs can be created only for «DETA-Ritm» and «DeVita Ritm» devices. To add the program, connect to the reference book of the DETA-RITM or DeVita RITM device and turn it on. After the device is identified, press control panels for the newly-appeared «User Programs» item (*scheme 17*) and in «DETA-Ritm» and «DeVita Ritm» (*scheme 18*).

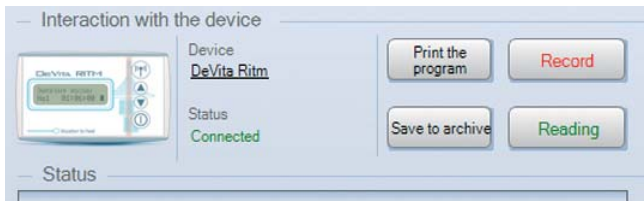
Click on the button  «Add a category».

A window appears (*scheme 19*)

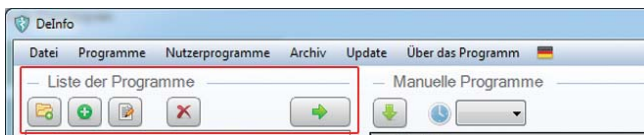
Select «language» (Here – English), and in the line «Name»



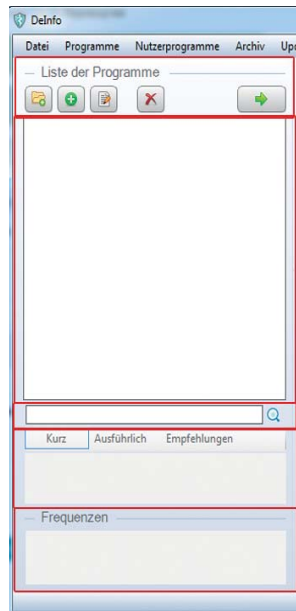
scheme 11



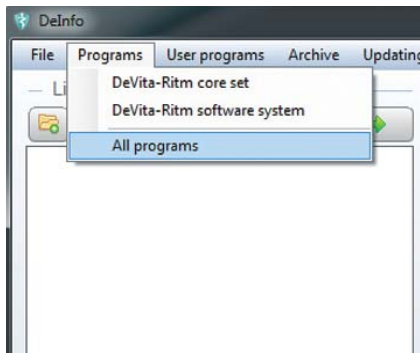
scheme 12



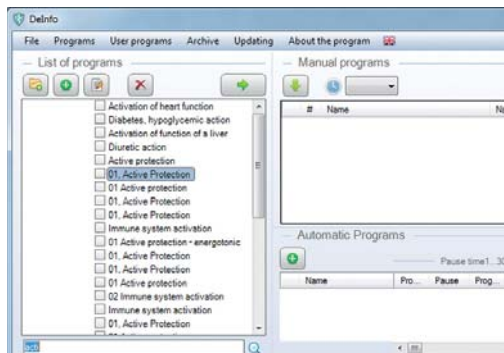
scheme 13



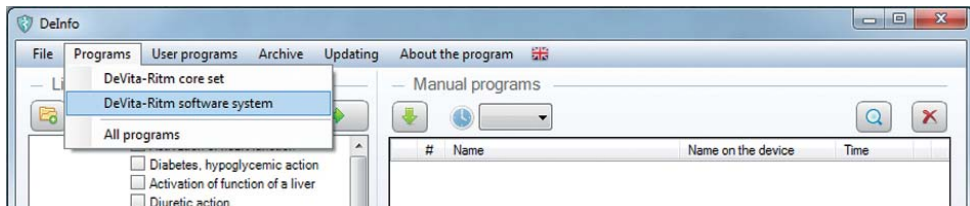
scheme 14



scheme 15



scheme 16



scheme 17

Specify the naming category, for example, «Test Program» (*scheme 20*).

Click on the «Create» button.

Categories will be created (*scheme 21*).

Then click on the  «Add Program» button.



In the newly appeared «Creation of Programs» panel, choose the language and fill in the available field according to the program created by you (for example, «Test 1»).

Attention! On the «Name on the Device» line, the program name will be displayed on the screen of the device. It has to contain no more than 16 symbols (including gaps) for the M1 devices, no more than 30 for M2 devices and DeVita series devices. The name of the program has to be unique (it is impossible to use names which already exist in the «List of Programs»).

In the «Frequency (Hz)» line, the fractional value is entered through a point (*scheme 22*).

Upon completion of inputting, press «Save». In the «List of Programs», the program you created should appear (*scheme 23*).

2. Editing

Note the editing programming icon  and click on the  «Edit» button (*scheme 24*).



There will be a «Program Creation» panel. Make necessary

amendments and click on the «Save button».

3. Deletion

Note the delete program icon  and click on the  delete button (*scheme 25*).

After confirmation by pressing the «Yes» button, the program will be deleted.

In a similar fashion, the category can be removed. Note the delete program icon  and click on the  delete button (*scheme 26*).

After confirmation by pressing the «Yes» button, the category is deleted.

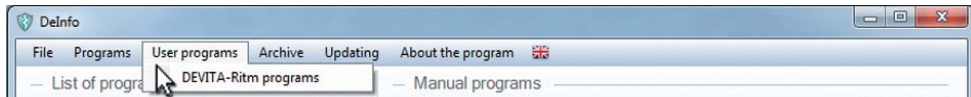
Attention! While removing of the category, all programs entered in it will also be removed.

2.2.4. Working with the database of the user

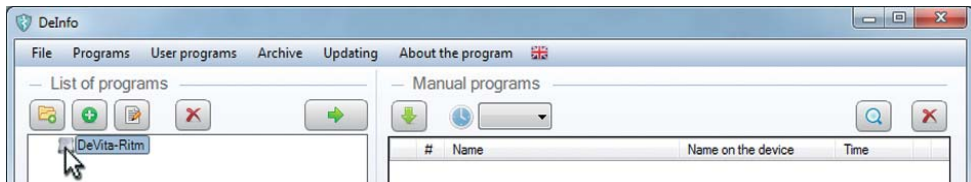
The user, at any moment, using the following command, can:

- Create a backup copy of the user database;
- Restore the user database from backup;
- Clear the user database.

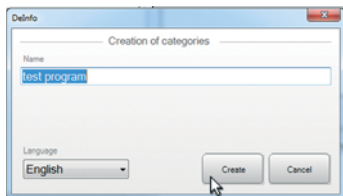
Attention! While executing the previously mentioned commands, the serial number of the reference book will be recognized. It is impossible to restore a database from the backup copy created by using the programming tool with a different serial number.



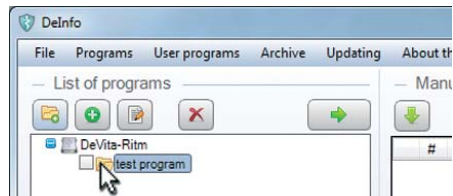
scheme 18



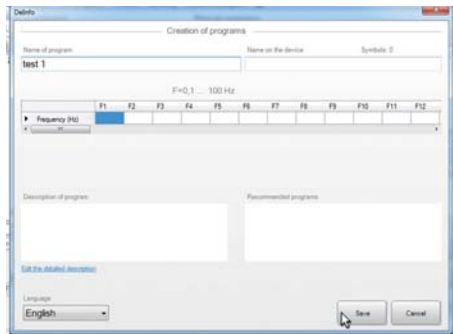
scheme 19



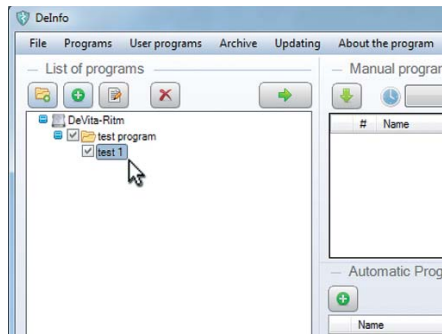
scheme 20



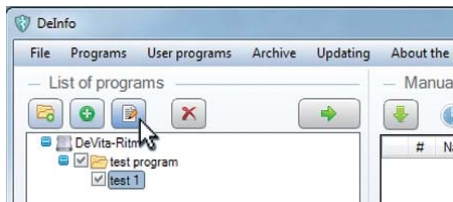
scheme 21



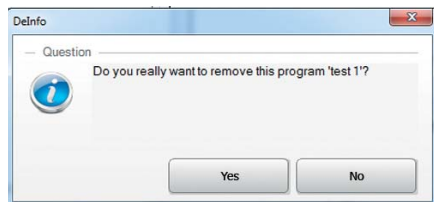
scheme 22



scheme 23



scheme 24



scheme 25

On the main control panel, select the «File» menu. After that, there will be a list of commands (*scheme 27*).

1. Creation of a backup copy of the database of the user:

By using the «Create a backup copy of the user database» command (*scheme 28*).


Choose a place for the creation of a database and create the folder:

Confirm copy creation by pressing the  button (*scheme 29*).

2. Restoration of a database of the user from a backup copy:

By using the «Restore the user database from backup» command (*scheme 30*) click on the «Restore the user database from backup » button.

Attention! During restoration of the database of the user from a backup copy, the current database of the user will be lost (*scheme 31*).

Choose the folder in which the backup copy of a database of the user is to be stored (*scheme 32*) and confirm database restoration by pressing the  button.

3. Cleaning up of the database of the user:

By using the «Clear the user database» command (*scheme 33*) Press the «Clear the user database» button (*scheme 34*).

Attention! When cleaning up a database of a user, data will be lost (only the database of the user).

2.3. Working with health-improvement programs





Working with programs consists of filling in data from the «Manual Program» and «Automatic Programs» zone.

2.3.1. Manual Programs

The programs, included from the front panel of the device, work independently from each other.

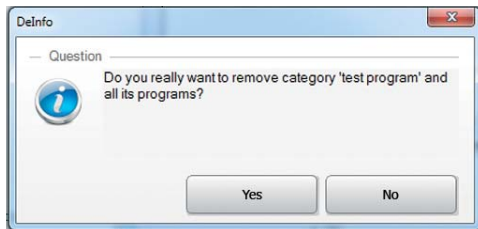
The «Manual Programs» field window is intended for generating of the list of programs which are written down in the device and is filled in by copying of programs from the «List of Programs» field window.

The control panel consists of four points:

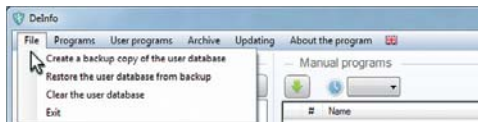
-  Add the programs in the automatic program
-  Time for frequency
-  Find the program from the list of programs
-  Delete all noted programs from the list

2.3.1.1. Formation of a list of programs

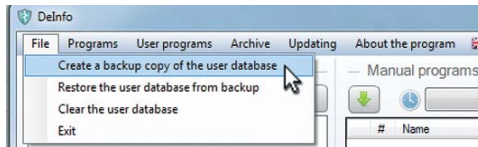
The quantity of written-down manual programs is defined by the device type.



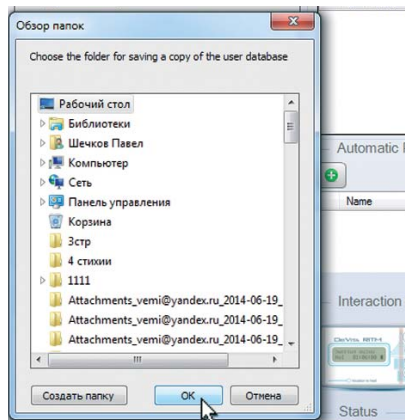
scheme 26



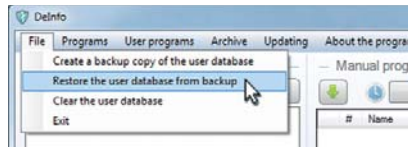
scheme 27




scheme 28




scheme 29




scheme 30



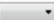
According to the technique stated in page 2.2, choose the programs for recording by clicking on the  button, copy them in the «Manual programs» window.

1. Copying of the Section (scheme 35)

Choose the necessary section by selecting the icon, and, by clicking on the , button and by copying it to the «Manual Programs» window.

2. Copying of separate programs

Choose the necessary programs taking note of their icon, and by clicking on the , button, copying them in the «Manual Programs» window (scheme 36)



From the   point on the menu, specify the frequency time, by choosing it from the list that appears by pressing the  command button (scheme 37)

In the formed program list, it is possible to change places.


3. Controlling Markers

To select with a marker or an icon the line and hold down the left button of the mouse «to drag» a line to a new location. To release the mouse button, the program will trade places (schemes 38).


4. Control of Shooters

To select a icon with a marker, click on the  or  arrows, to steadily navigate it to a new place (schemes 39).

5. Deletion of programs

If necessary, remove the program by selecting the icon and click on the button .

2.3.1.2. Program search in the list of programs

By noting the icon of the program and by clicking on the , button, it is possible to learn from what complex or set in the «List of programs» this program (in the example given below the «Chakra» program was copied from a basic set of «7 charkas») was copied.

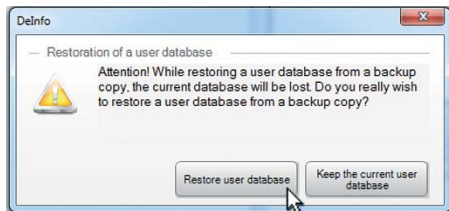
In the absence of programs in the database, the following message is issued: «Not available in the database. It is impossible to program». For example, when reading another user's programs from the device, which are absent in your «User programs» database.

2.3.2. Automatic programs

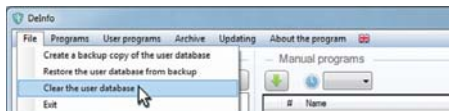
The programs include a set of programs which are organized in a pre-determined order.

The device independently «Wakes up» and «Goes off to sleep» during the entire time of implementation of the automatic program. Thus, the choice and inclusion of the automatic program is done manually.

In the «Automatic Programs» field window, a list is intended for the formation of programs which are written down in the device



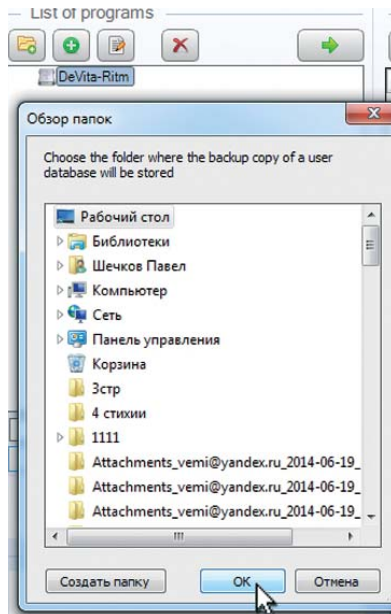
scheme 31



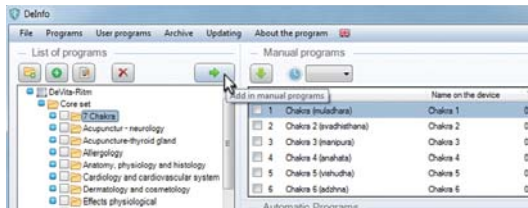
scheme 33



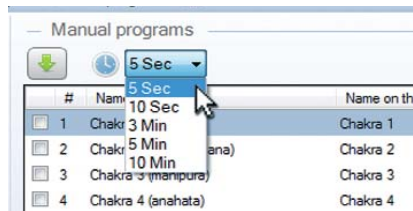
scheme 34



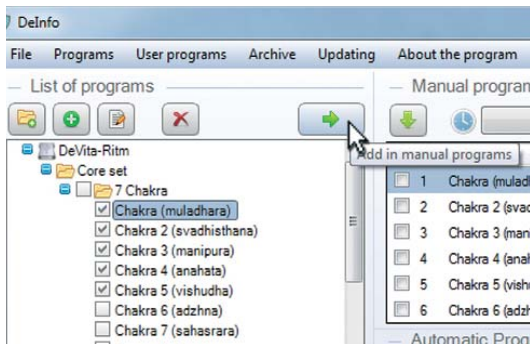
scheme 32



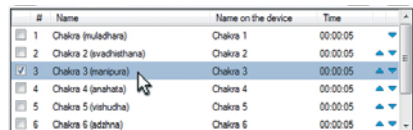
scheme 35



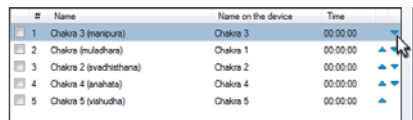
scheme 37



scheme 36





scheme 38



scheme 39


and are filled out by a serial number of the program from a field of the «Manual Programs» window and the pause time setting.


The control panel consists of two points (*scheme 40*):

-  to add the automatic program
-  to delete all noted automatic programs.

2.3.2.1. Formation of the list of programs

For formation of the list, click on the button 

If necessary, set a name for the program. For this purpose, put the cursor in the field , double click and change the name of the program (*schemes 41-43*).

Specify the icon programs in the field of the «Manual Programs» window and, by clicking on the  button, copy their serial numbers in the «Automatic Programs» window.

Columns «Pr. 1 thru Pr.40» in the «Automatic programs» table, while copying programs by the list are filled in sequence of their arrangement in the «Manual Programs» window field. In the event of needing to re-arrange programs in any necessary order, it is necessary to specify and copy the number of each program separately.

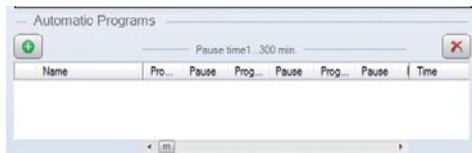
Further in the column «Pause», specify the pause time between turning on different programs (time of a pause is set in minutes ranging from 1 to 300). In this example, the pause time is 10 min.

In the column «Time», the general time of implementation of the automatic program is displayed and takes pauses into account (*schemes 44-46*).

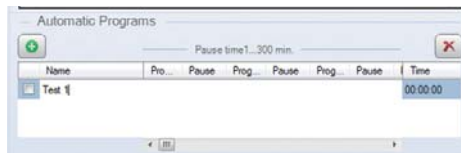
2.3.2.2. Programming features of «DETA-AP» devices of the 1st production line

For «DETA-AP» devices of the 1st production line, programs from the «Manual Programs» list, copied in the «Automatic Programs» list can't be used as independent «Manual Programs». They can be used only as a part of the «Automatic programs» list. Therefore, if it is necessary to use the program in both lists, it is necessary to duplicate it under other serial numbers in the «Manual Programs» list (*scheme 47*).

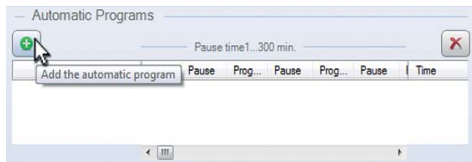
Thus, the name of the automatic program doesn't register in the device and its performance begins at the start of the program, located in the column «Pr. 1» «Automatic programs». In this example, 6 programs will be written down in the device. However, on the display of the device, 5 programs will be highlighted only: the automatic program isn't displayed. Programs «01. Drainage therapy» and «04. Candida» can be used as separate «Manual Programs», when chosen from the device at numbers 4 and 5 respectively. The nameless automatic program that is a part of the consistently carried out programs «01. Drainage therapy», «04. Candida» and «08. Salmonellosis» start working when the N1 «01. Drainage therapy» program starts up.



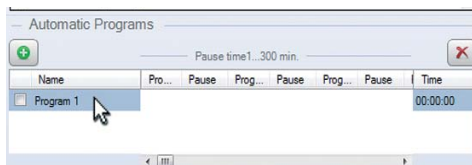
scheme 40



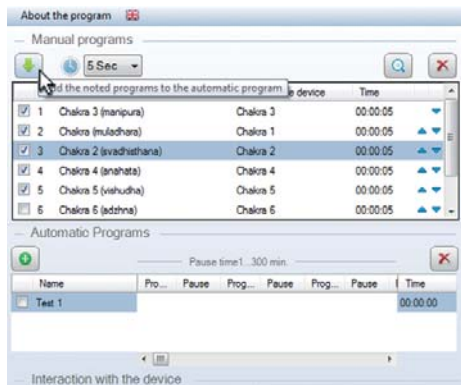
scheme 43



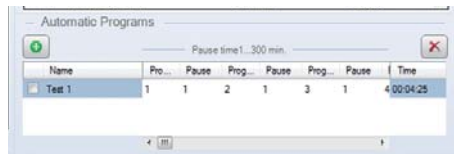
scheme 41



scheme 42



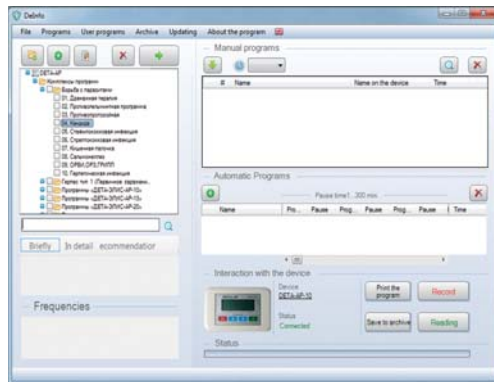
scheme 44



scheme 45



scheme 46



scheme 47




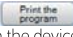
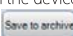

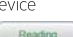
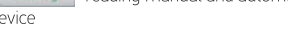
scheme 48

2.4. Interaction with the device

The «Interaction with the Device» field window is intended for realization of management operations of the device (*scheme 48*).

Attention! The device has to be switched on.

The field of the window contains six points:

-  identification of the Connected device
-  the printing of the programs which are written down in the device
-  creation of archival programs
-  record of manual and automatic programs in the device
-  reading manual and automatic programs from the device
-  operating condition of the record\reading.

2.4.1. Device identification

After connecting the device to the reference book of the software program, the device type should be recognized within 30 seconds according to Tables 1 and 2.

As a result, an image appears in the window according to the identity and connection state of the device. 10. If necessary, specify the serial number of the reference book and personal user number by clicking on the name

of the device (*scheme 49*).

Attention! The M1 devices private user number is absent.

2.4.2. Recording

By pressing the «Record» button, the programs located in the «Manual» and «Automatic» lists register the device. Thus, the status of the recording process is displayed in the «Status» line. A completely filled «Status» line indicates a successful completion of task. The quantity of the written-down programs is displayed under the line.


Attention! Where available in the «Manual Programs», there will be a line with the message «Not available in the database. It is impossible to program». It is essential to delete these lines before recording (*scheme 50*).

2.4.3. Print the program

This command is intended for previewing and printing the list of the programs which are written down in the device to enhance usage. Click on the button «Print the program» in the newly appeared «Print» window. If necessary, fill in the «Commentary for Printing» field and click on the «Print» button (*scheme 51*).

There will be a preview panel.

The function of the «Preview» menu icon on the control panel corresponds to the icon of the standard print program (functions can

be specified by guiding an arrow marker to the corresponding point). Printing can be accomplished by clicking on the  button (*scheme 52*).

2.4.4. Reading

This command is intended for reading the programs, which have been written down in the device. Further only a few programs can be corrected according to normal procedure (*scheme 53*).

Attention! While reading programs from the device, current programs will be replaced. The M2 and DeVita devices are both considered to be «Manual Programs» and «Automatic Programs». M1 devices are considered «Manual Programs» only. Thus, instead of «Automatic Programs» in the «Manual Programs» list, a typing bar appears indicating: «Not available in the base. It is impossible to program», which needs to be deleted.

2.4.5. Archiving

It is used for saving of the created program lists for the purpose of their further use (*scheme 54*).

1. Archival Records

Click on the «Save to Archive» button.

Select the window field and click on the «Save to Archive» button.

2. Reading from the Archive (*scheme 55*).

Select the «Archive» icon from the main control panel and in the

new «Archive» window, highlight the desired line with the

After the «Choose» command appears on the screen, there will be a list corresponding to previously archived programs.

3. Deleting from the Archive

Highlight a deleted line with the icon and click on the «Delete» button.

By clicking on the «Yes» button, you confirm removal of the archival record.

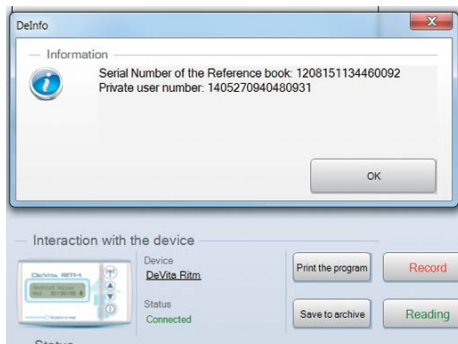
2.5. Updating

The point is intended for carrying out software updates. Select the «Updating» item on the main control panel and click «Check updates...» (*scheme 56*).

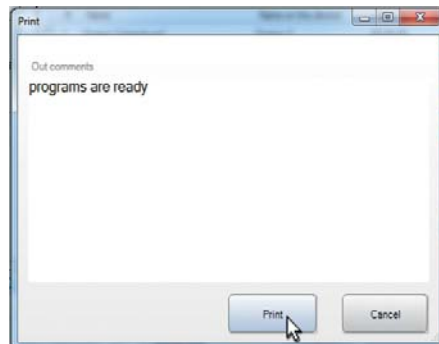
If in the «Base of Programs» and «Basic Program» windows there is information on the existence of the new version, execute software updating by clicking on the corresponding «Upload» button (*scheme 57*).

2.6. About the Program

The point is intended for granting reference material about the program's release number (*scheme 58*).



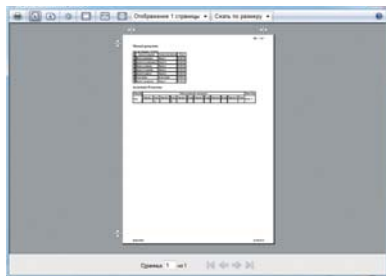
scheme 49



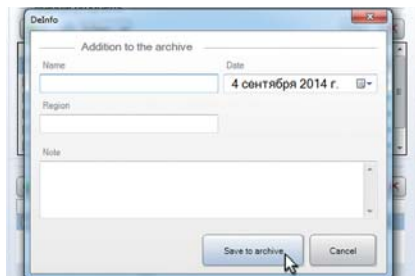
scheme 51



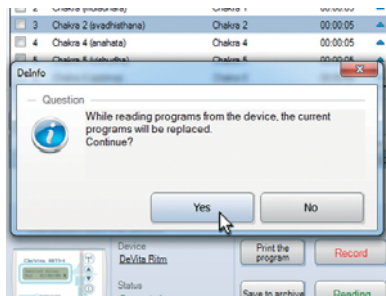
scheme 50



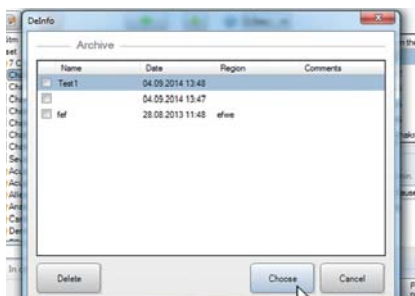
scheme 52



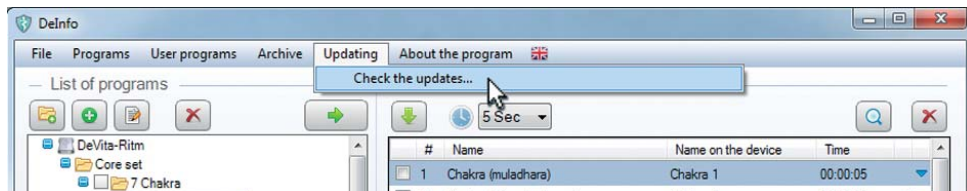
scheme 54



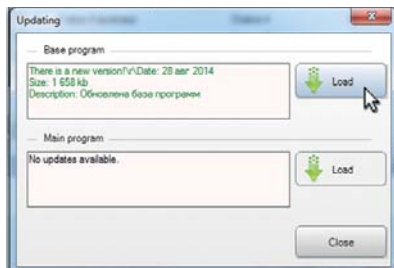
scheme 53



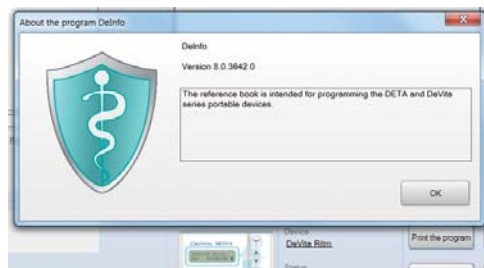
scheme 55



scheme 56



scheme 57



scheme 58